



FOR SALE

4250 Tower Drive Prior Lake, MN 55316

Offered By:

Daniel A. Peterson

dan@adamcres.com

Adam Commercial

Real Estate Services, LLC
7855 Wayzata Boulevard
Minneapolis, MN 55426

phone **952.746.5115**

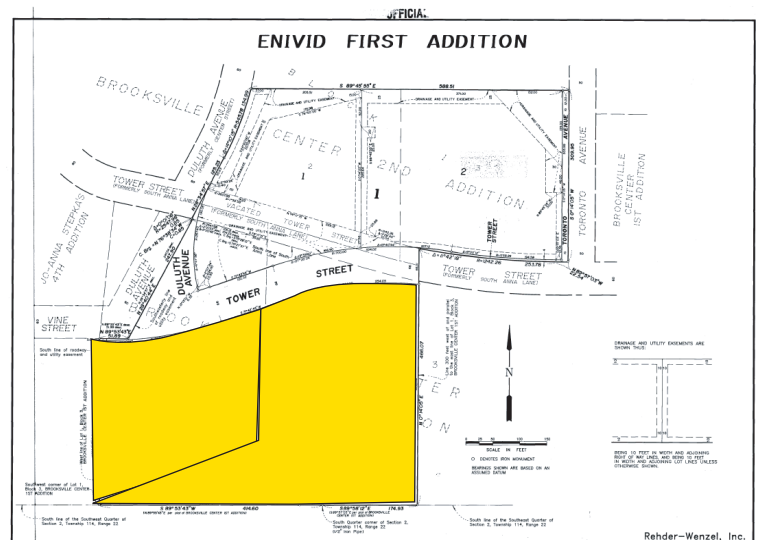
fax **952.487.4708**

www.adamcres.com



Rare commercial lot in Prior Lake
located by renovated Strip Center

New regional post office across street
Area road improvements completed in '05



LOT SIZE: 2.88 Acres (2 acres usable)

LEGAL DESCRIPTION: Lot 1, Block 2, ENIVID 1st ADDN.
& Outlot A, ENIVID ADDN.

PARCEL NUMBER: 25-269003-0

ZONED: C-4, General Business

OFFERING PRICE: \$544,500(\$6.25 per usable sf.)